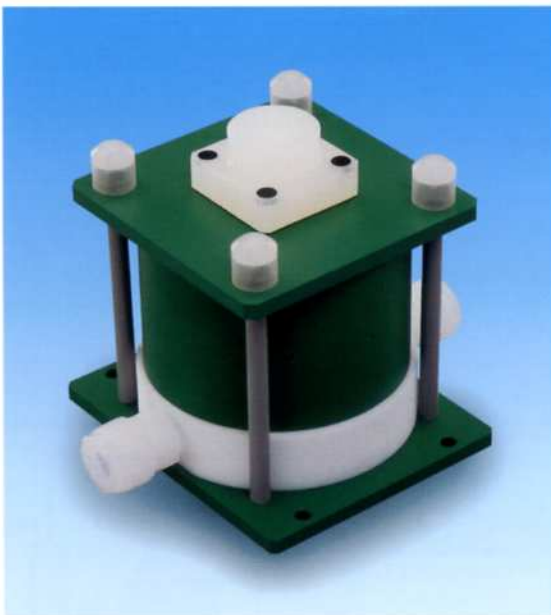


## PA Series Auto Accumulator

The PA Series Auto Accumulator is designed for fully automatic operation. No on-site adjustment is required - the chamber pressure follows pump pressure fluctuations automatically.



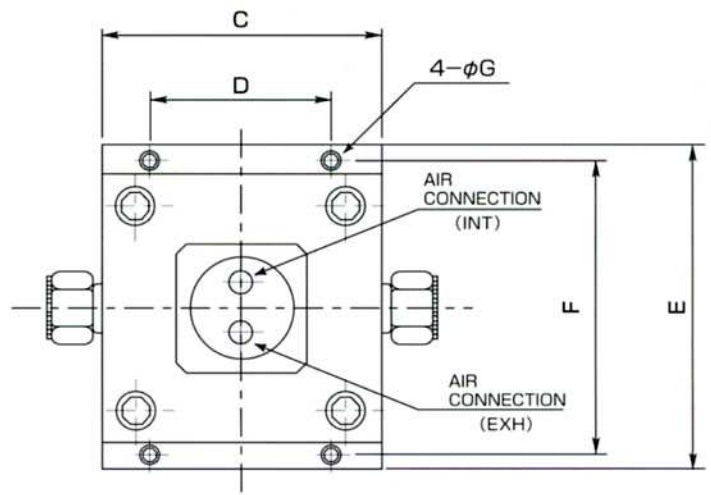
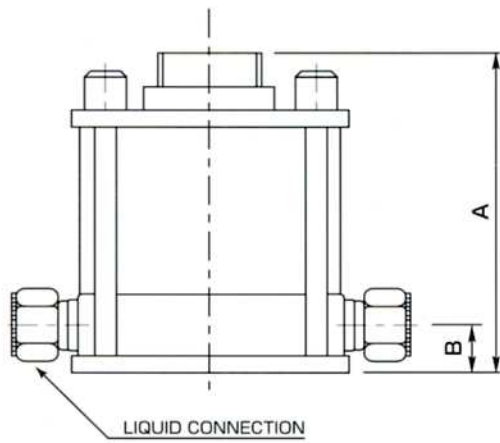
### Features

- Automatic pressure compensation for fluctuations due to filter clogging or valve actuation.
- Operates in temperatures from 10°C to 180°C , and line pressures from 0 to 0.45MPa ( 0 to 64psi ).
- Bellows faces downward to allow complete drainage of process fluid.
- Thicker "R shape" bellows, with large bore and short stroke length, means high reliability and longer maintenance intervals.
- All PTFE / PFA wetted parts.

### Specification

TYPE	COMPATIBLE PUMP	OPERATING TEMP °C (°F)	OPERATING PRESSURE MPa/(psi)	SUPPLY AIR PRESS MPa/(psi)	LIQUID CONNECTION * mm (inch)	AIR CONNECTION (N type)
PA-10HB (N)	PE-10MA(N) PE-10HB(N)	10 - 180 (50 - 356)	0 - 0.45 (0 - 64)	0.2 - 0.5 (28.4 - 71.1)	12×10 (1/2×3/8)	2-Rc 1/4" (2-NPT 1/4")
PA-20HB (N)	PE-20MA(N) PE-20HB(N)				19×15.8 (3/4×5/8)	
PA-40HB (N)	PE-40MA(N) PE-40HBH(N)	10 - 160 (50 - 320)			25×22 (1×7/8)	
PA-80MB (N)	PE-80MA(N)	10 - 80 (50 - 176)				

\* SUPER TYPE PILLAR FITTING OR SUPER 300 TYPE PILLAR FITTING



## Dimension

mm (inch)

TYPE	A	B	C	D	E	F	φ G
PA-10HB (N)	176 (6.93")	23 (0.91")	133 (5.24")	86 (3.39")	164 (6.46")	145 (5.71")	9 (0.35")
PA-20HB (N)	199 (7.83")	29 (1.14")	162 (6.38")	106 (4.17")	195 (7.68")	176 (6.93")	9 (0.35")
PA-40HB (N)	286 (11.26")	32.5 (1.28")	188 (7.40")	122 (4.80")	225 (8.86")	204 (8.03")	11 (0.43")
PA-80MB (N)	298 (11.73")	34.5 (1.36")	228 (8.98")	150 (5.91")	265 (10.43")	244 (9.61")	11 (0.43")

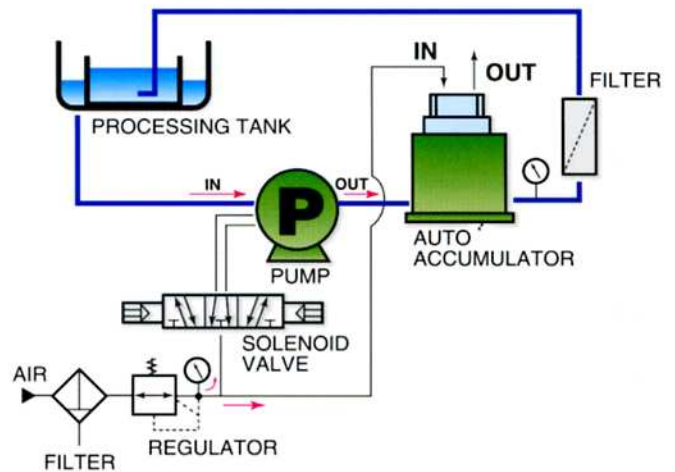
## Model identification

**PA-10 MB N**

①      ②      ③

- ① Capacity (ℓ/min) : 10 : 10 ℓ/min  
20 : 20 ℓ/min  
40 : 40 ℓ/min  
80 : 80 ℓ/min
- ② Operating Temperature range : HB : 10 - 180°C (PA-10, 20)  
10 - 160°C (PA-40)  
MB : 10 - 80°C (PA-80)
- ③ Connection : No mark : PT, metric  
N : NPT, inch

## Layout Example



## NIPPON PILLAR PACKING CO., LTD.

**Head Office:** 11-48, Nonakaminami 2 Chome, Yodogawa-ku, Osaka, 532-0022 Japan.  
Tel : 81-(0)6-6305-2821 Fax : 81-(0)6-6302-3300  
E-mail : info@pillar.co.jp

**Tokyo Office:** 2-2, Uchisaiwaicho 2 Chome, Chiyoda-ku, Tokyo, 100-0011 Japan.  
Tel : 81-(0)3-3508-1611 Fax : 81-(0)3-3508-1881

**Nippon Pillar Corporation of America:** 1562, Parkway Loop, Suite2C, Tustin, CA 92780, USA.  
Tel : 1-714-258-7741 Fax : 1-714-258-7760  
E-mail : sales@nipponpillar.com

**Nippon Pillar Singapore Pte, Ltd.:** 10 Toh Guan Road #02-03 TT International Tradepark Singapore 608838  
Tel : (65)6861-7138 Fax : (65)6862-9098  
E-mail : npillars@singnet.com.sg

**Pillar Taiwan Semiconductor Work Shop:** No.15 Lane 42, Ming-Yu 2 Street, Hsin-Chu, Taiwan, R.O.C.  
Tel : 886-3-5785715 Fax : 886-3-5785716  
E-mail : homwell@ms9.hinet

**Pillar Korea Semiconductor Work Shop:** 55-1, Changkoc-1RI, Paltan-Myun, Hwasung-Kun, Kyoungki-Do, KOREA.  
Tel : 031-353-1521 Fax : 031-353-1522  
E-mail : hanjongeng@hotmail.com



URL  
<http://www.pillar.co.jp/>

\*Specifications and dimensions are subject to change without prior notice.  
\*The data on this catalogue are solely for your reference and are not to be construed as constituting a warranty.



- Follow the instructions, before installation and operation, for your safety.